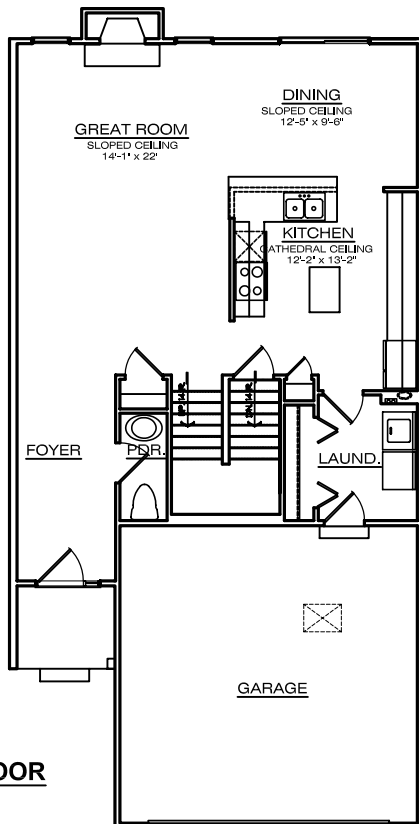


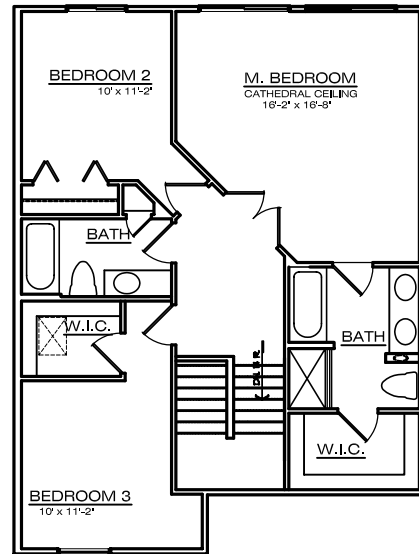
THE CYPRESS



ELEVATION



FIRST FLOOR
916 S.F.



SECOND FLOOR
939 S.F.

TOTAL SQUARE FOOTAGE
1,855 S.F.



BUILDING GREAT TRADITIONS

Visit us at www.wexfordhomes.com

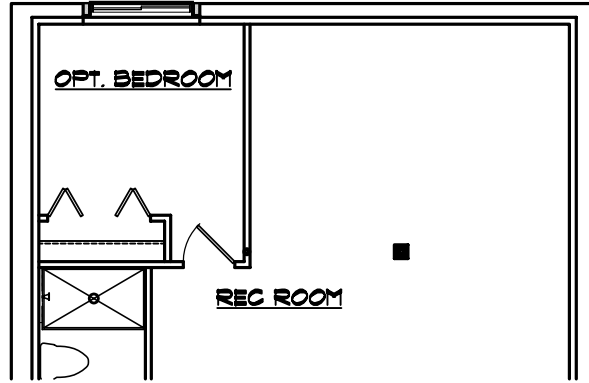
Artist renderings and floorplans are subject to field verifications and all dimensions are approximate. See your community sales manager for details.

© 2005, Wexford Homes, Inc.

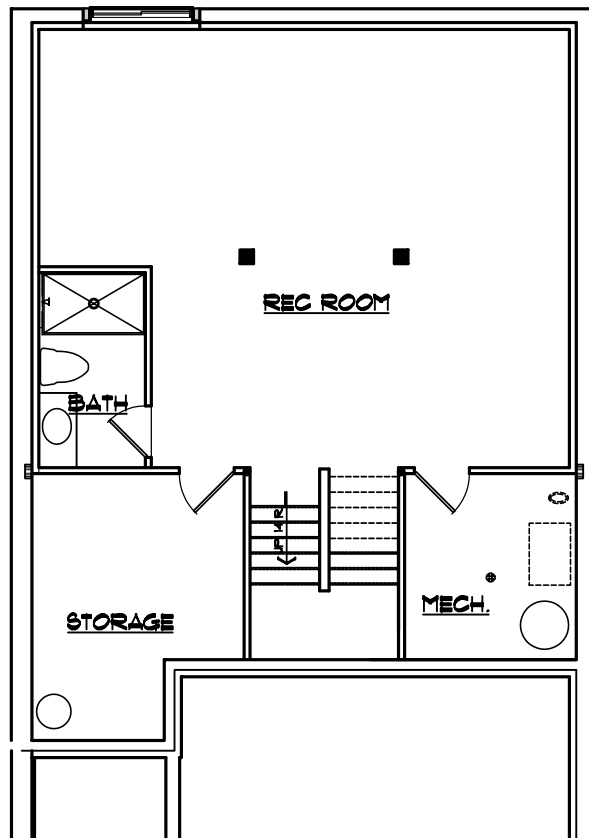


REV: 6/5/06

THE CYPRESS



FINISHED BASEMENT w/ BEDROOM



**FINISHED BASEMENT
578 S.F.**



Visit us at
www.wexfordhomes.com

Artist renderings and floorplans are subject to field verifications and all dimensions are approximate. See your community sales manager for details.

© 2005, Wexford Homes, Inc.

